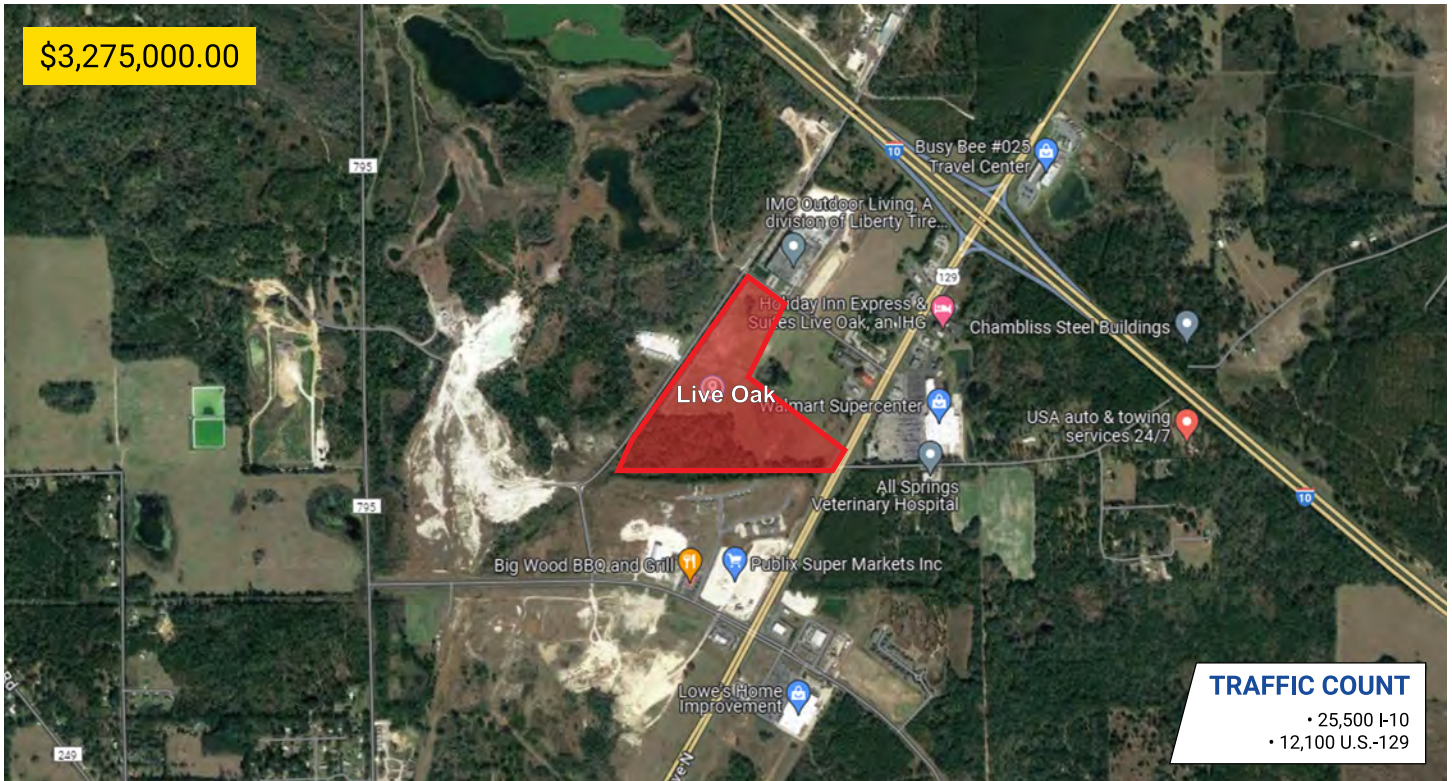


# Live Oak

LIVE OAK, FLORIDA 32060



developments | real estate | construction  
615-896-0000



**Acres:** 54 +/-  
**Structures:** N/A  
**Amenities:** N/A  
**Road Frontage:** 370 ft. +/-  
**Property Type:** Land  
**Zoning:** Commercial

## PROPERTY HIGHLIGHTS

- Easy Access to I-10 and U.S.-129
- Approx. 1 hour to Jacksonville Airport



## DEMOGRAPHIC SNAPSHOT

### SUWANNEE COUNTY

2023 Population Estimate	46,730
2023 Median HH Income	\$49,729
2023 Number of Households	15,453



**615-896-0000**

[www.swansondevelopments.com](http://www.swansondevelopments.com)

The information herein has been obtained from sources believed to be reliable. There is no guarantee, warranty or representation that the information herein is accurate. Any projections, opinions, assumptions, or estimates used are for example only and do not represent the current or future performance or value of the property. Property location imagery provided by Google Maps.