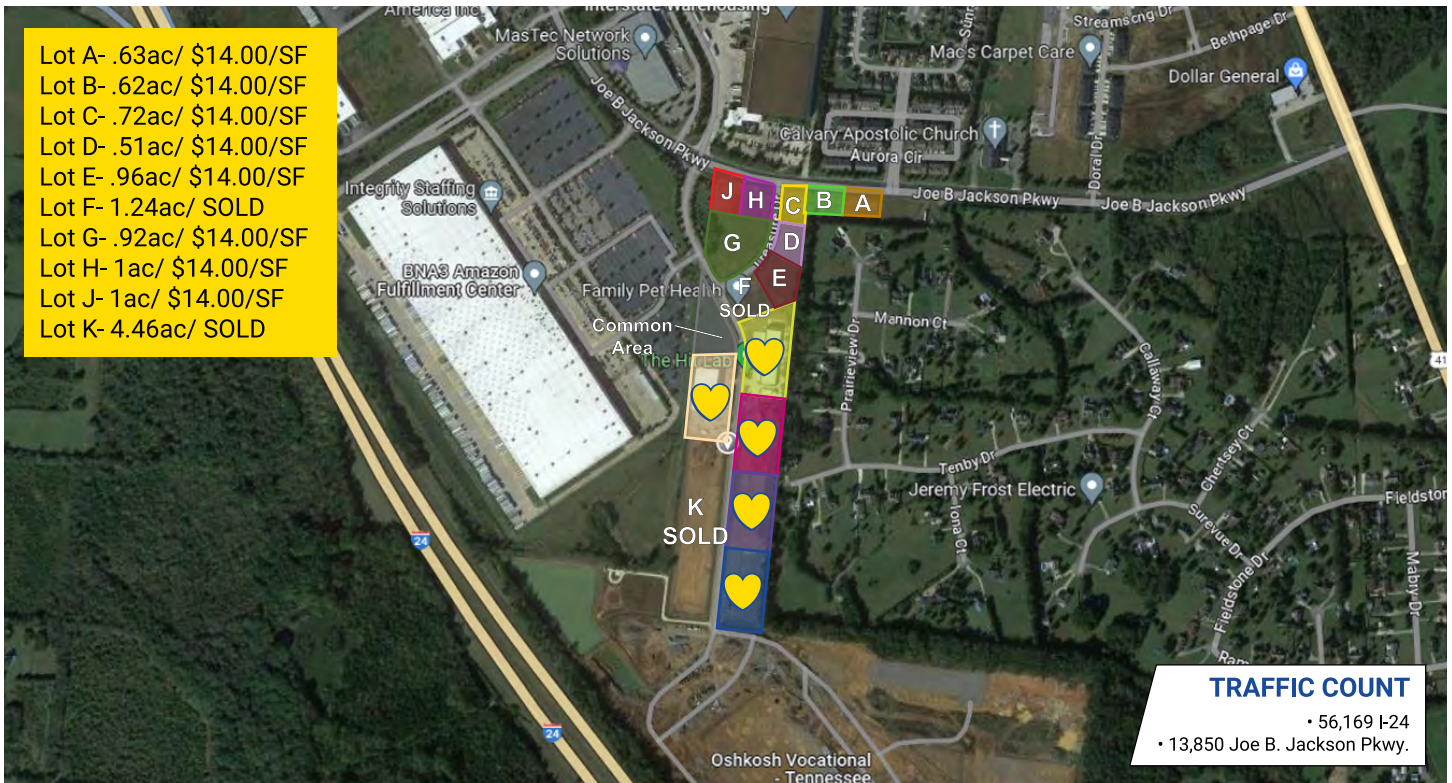


Parkway Place

MURFREESBORO, TENNESSEE 37127



developments | real estate | construction
615-896-0000



Acres:	6.36 +/-
Structures:	N/A
Amenities:	N/A
Road Frontage:	840 ft. +/-
Property Type:	Land
Zoning:	PID

PROPERTY HIGHLIGHTS

- Next to Amazon Fulfillment Center
- See Rep., for permitted uses
- Easy Access to I-24, U.S.-231 and U.S.-41
- Approx. 35 minutes to Nashville Airport



DEMOGRAPHIC SNAPSHOT

	RUTHERFORD COUNTY
2023 Population Estimate	365,150
2023 Median HH Income	\$78,291
2023 Number of Households	139,340



615-896-0000
www.swansondevelopments.com

The information herein has been obtained from sources believed to be reliable. There is no guarantee, warranty or representation that the information herein is accurate. Any projections, opinions, assumptions, or estimates used are for example only and do not represent the current or future performance or value of the property. Property location imagery provided by Google Maps. 02/24