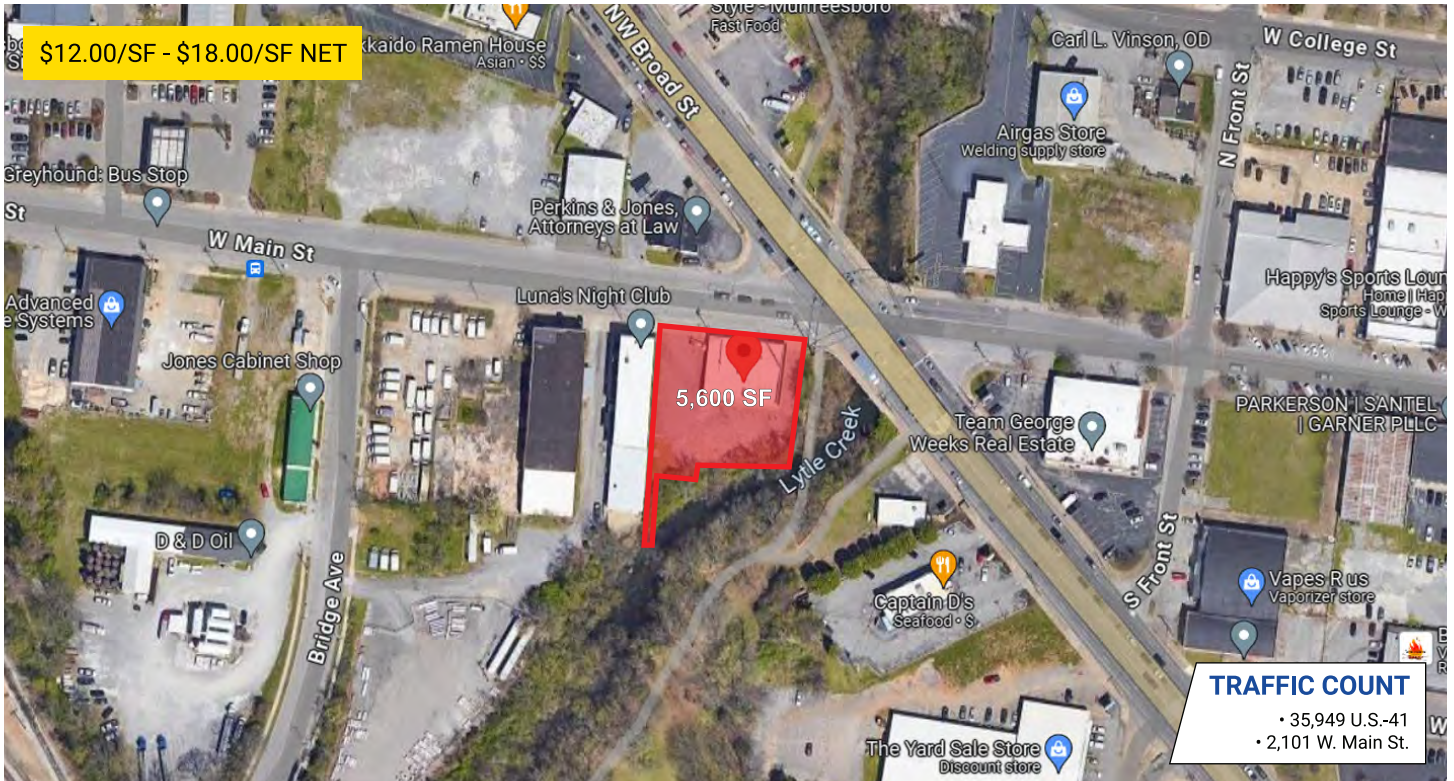


# 517 W. Main St.

MURFREESBORO, TENNESSEE 37129



developments | real estate | construction  
615-896-0000



Building SF:	5,600	Eave Height:	14'
# of Units:	3	Electricity:	110/220v; 400amp
Units SF:	1,700 - 2,122	Zoning:	Heavy Industrial

## PROPERTY HIGHLIGHTS

- Single & 3 phase electric
- Advertise on 1/4 of the billboard sign for an additional \$100/month
- Easy Access to I-24, U.S.-41, U.S.-231 and Hwy 96
- Approx. 30 minutes to Nashville Airport

## DEMOGRAPHIC SNAPSHOT

RUTHERFORD COUNTY

2023 Population Estimate	365,150
2023 Median HH Income	\$78,291
2023 Number of Households	139,340



615-896-0000

[www.swansondevelopments.com](http://www.swansondevelopments.com)

The information herein has been obtained from sources believed to be reliable. There is no guarantee, warranty or representation that the information herein is accurate. Any projections, opinions, assumptions, or estimates used are for example only and do not represent the current or future performance or value of the property. Property location imagery provided by Google Maps.