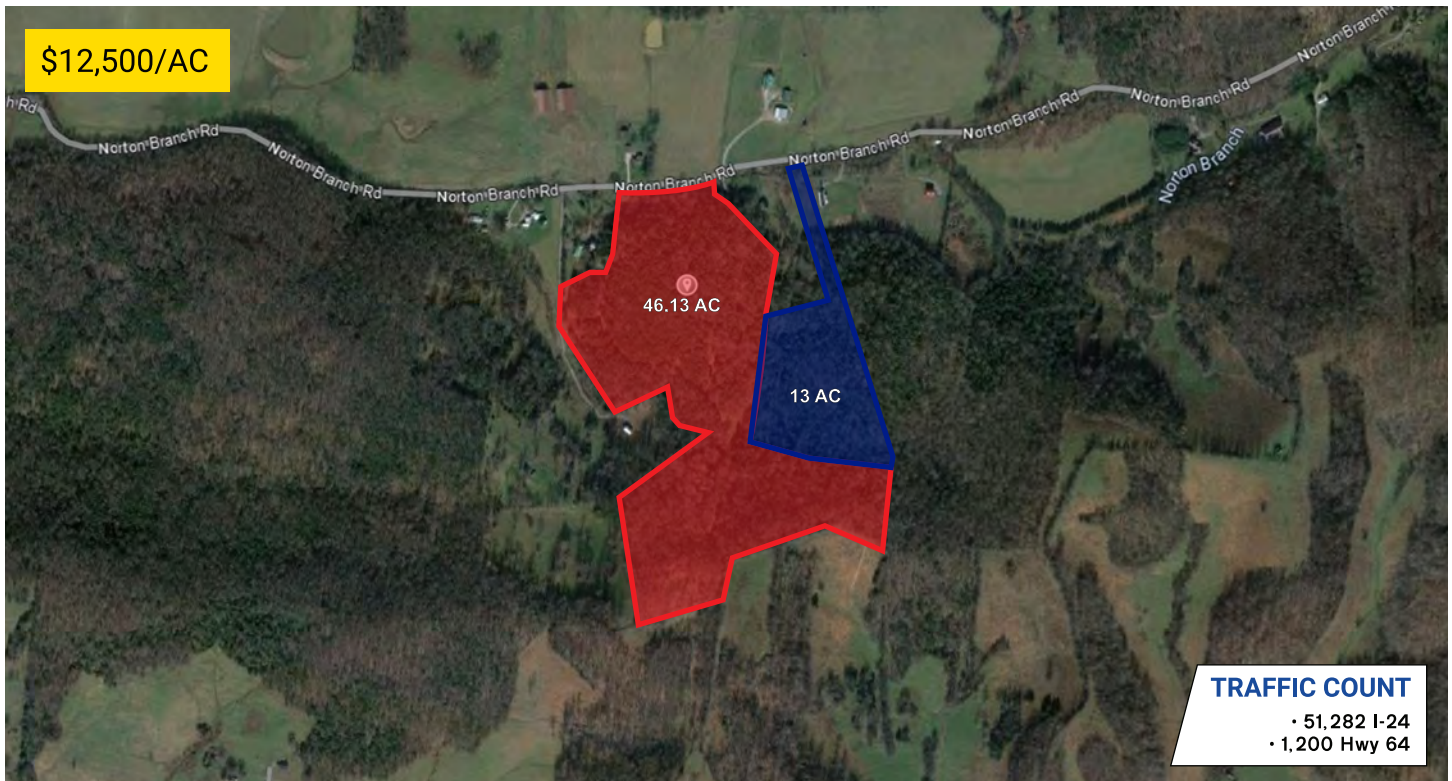


Norton Branch Rd.

BEECHGROVE, TENNESSEE 37018



Acres: 59.13 +/-
Structures: N/A
Amenities: N/A
Road Frontage: 615 ft. +/-
Property Type: Land
Zoning: FRST ; RES

PROPERTY HIGHLIGHTS

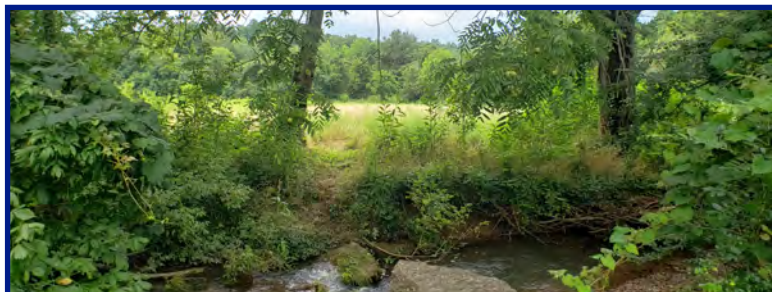
- Large Lot (46.13ac) zoned Forest
- Small Lot (13ac) zoned Residential
- Easy Access to I-24, U.S.-41, Hwy 64
- Approx. 1 hour to Nashville Airport



DEMOGRAPHIC SNAPSHOT

COFFEE COUNTY

2024 Population Estimate	61,487
2024 Median HH Income	\$57,424
2024 Number of Households	22,689



615-896-0000
www.swansondevelopments.com

The information herein has been obtained from sources believed to be reliable. There is no guarantee, warranty or representation that the information herein is accurate. Any projections, opinions, assumptions, or estimates used are for example only and do not represent the current or future performance or value of the property. Property location imagery provided by Google Maps.

02/25