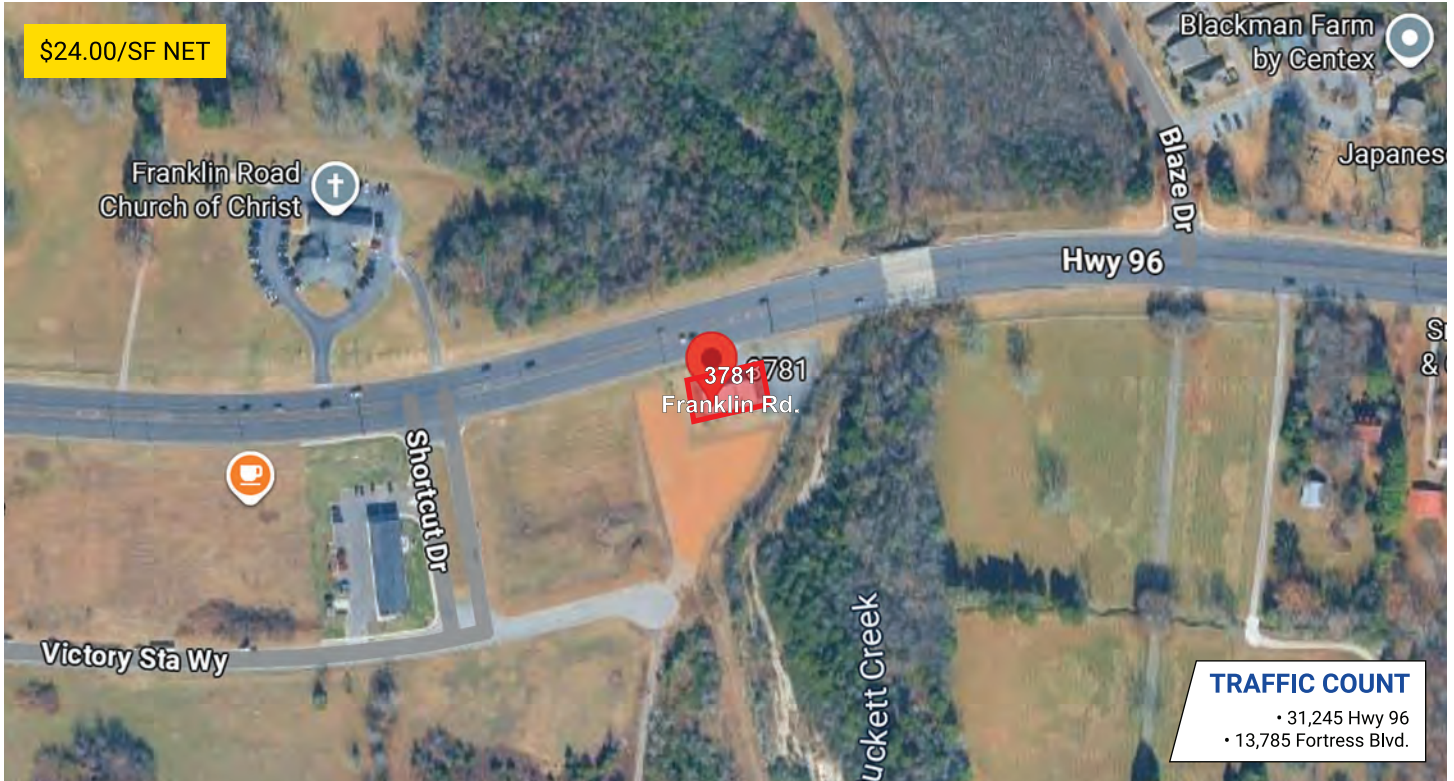


# 3781 Franklin Rd.

MURFREESBORO, TENNESSEE 37128



developments | real estate | construction  
615-896-0000



Building SF:	3,429	Eave Height:	-
# of Units:	3	Electricity:	-
Units SF:	1,143 - 3,429	Zoning:	PUD

## PROPERTY HIGHLIGHTS

- 1.5 acre lot
- Units can be combined or separated in increments of 1,143sf
- Conveniently located on Hwy 96 in the Victory Station South development
- Zoned PUD with specific permitted uses
- Easy Access to I-24, I-840 and Hwy 96

## DEMOGRAPHIC SNAPSHOT

RUTHERFORD COUNTY

2025 Population Estimate	358,394
2025 Median HH Income	\$87,758
2025 Number of Households	138,402



615-896-0000

[www.swansondevelopments.com](http://www.swansondevelopments.com)

The information herein has been obtained from sources believed to be reliable. There is no guarantee, warranty or representation that the information herein is accurate. Any projections, opinions, assumptions, or estimates used are for example only and do not represent the current or future performance or value of the property. Property location imagery provided by Google Maps.