

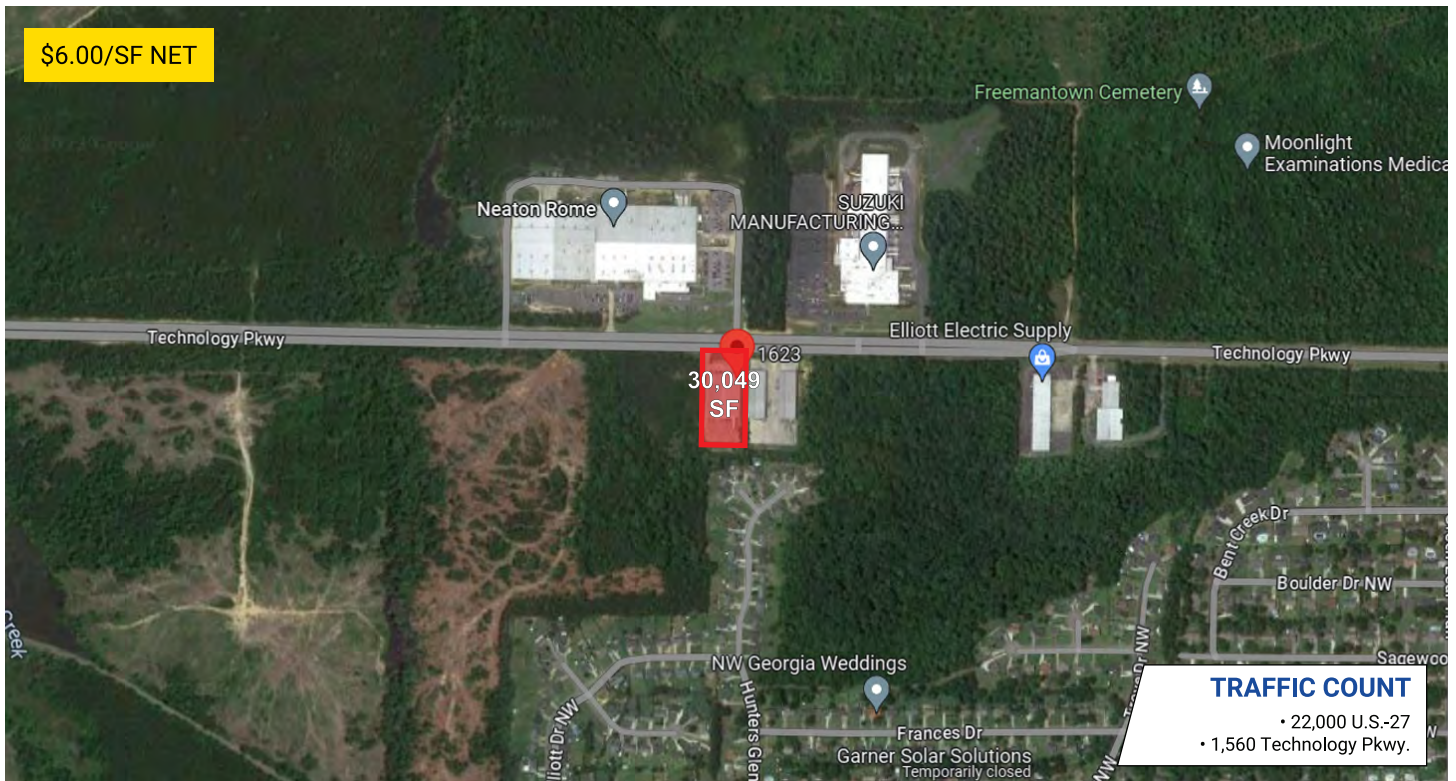
1623 Technology Pkwy.

ROME, GEORGIA 30165



developments | real estate | construction
615-896-0000

\$6.00/SF NET



TRAFFIC COUNT

• 22,000 U.S.-27
• 1,560 Technology Pkwy.

Building SF:	30,049	Eave Height:	24'6"
# of Units:	1	Electricity:	400amp
Units SF:	30,049	Zoning:	Heavy Industrial

PROPERTY HIGHLIGHTS

- Single & 3 phase electric
- Easy Access to U.S.-27 and Hwy 1
- Approx. 1.5 hours to Atlanta Airport
- Close to Redmond Regional Medical Center

DEMOGRAPHIC SNAPSHOT

FLOYD COUNTY

2023 Population Estimate	99,265
2023 Median HH Income	\$52,388
2022 Number of Households	40,908



615-896-0000

www.swansondevelopments.com

The information herein has been obtained from sources believed to be reliable. There is no guarantee, warranty or representation that the information herein is accurate. Any projections, opinions, assumptions, or estimates used are for example only and do not represent the current or future performance or value of the property. Property location imagery provided by Google Maps.