

610 S.E. Broad St.

MURFREESBORO, TENNESSEE 37130



developments | real estate | construction
615-896-0000



TRAFFIC COUNT

- 27,502 S.E. Broad St.
- 15,338 Dr. Martin Luther King Jr. Blvd.

Building SF:	1,250	Eave Height:	8'
# of Units:	1	Electricity:	100amps
Units SF:	1,250	Zoning:	Commercial Hwy.

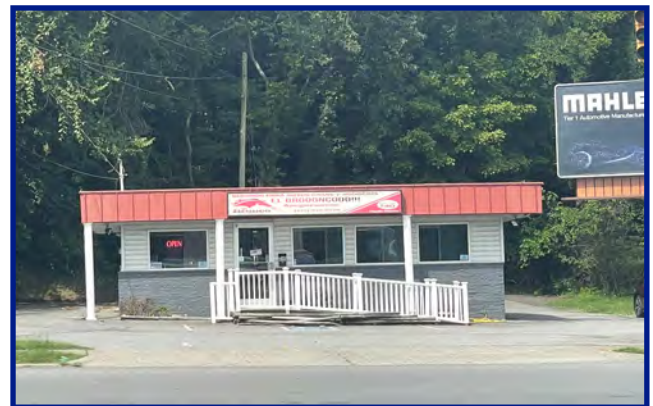
PROPERTY HIGHLIGHTS

- Single & 3 phase electric
- Easy Access to I-24, U.S.-231, U.S.-41, Hwy 99 and Hwy 96
- Approx. 30 minutes to Nashville Airport

DEMOGRAPHIC SNAPSHOT

RUTHERFORD COUNTY

2023 Population Estimate	365,150
2023 Median HH Income	\$78,291
2023 Number of Households	139,340



615-896-0000

www.swansondevelopments.com

The information herein has been obtained from sources believed to be reliable. There is no guarantee, warranty or representation that the information herein is accurate. Any projections, opinions, assumptions, or estimates used are for example only and do not represent the current or future performance or value of the property. Property location imagery provided by Google Maps.