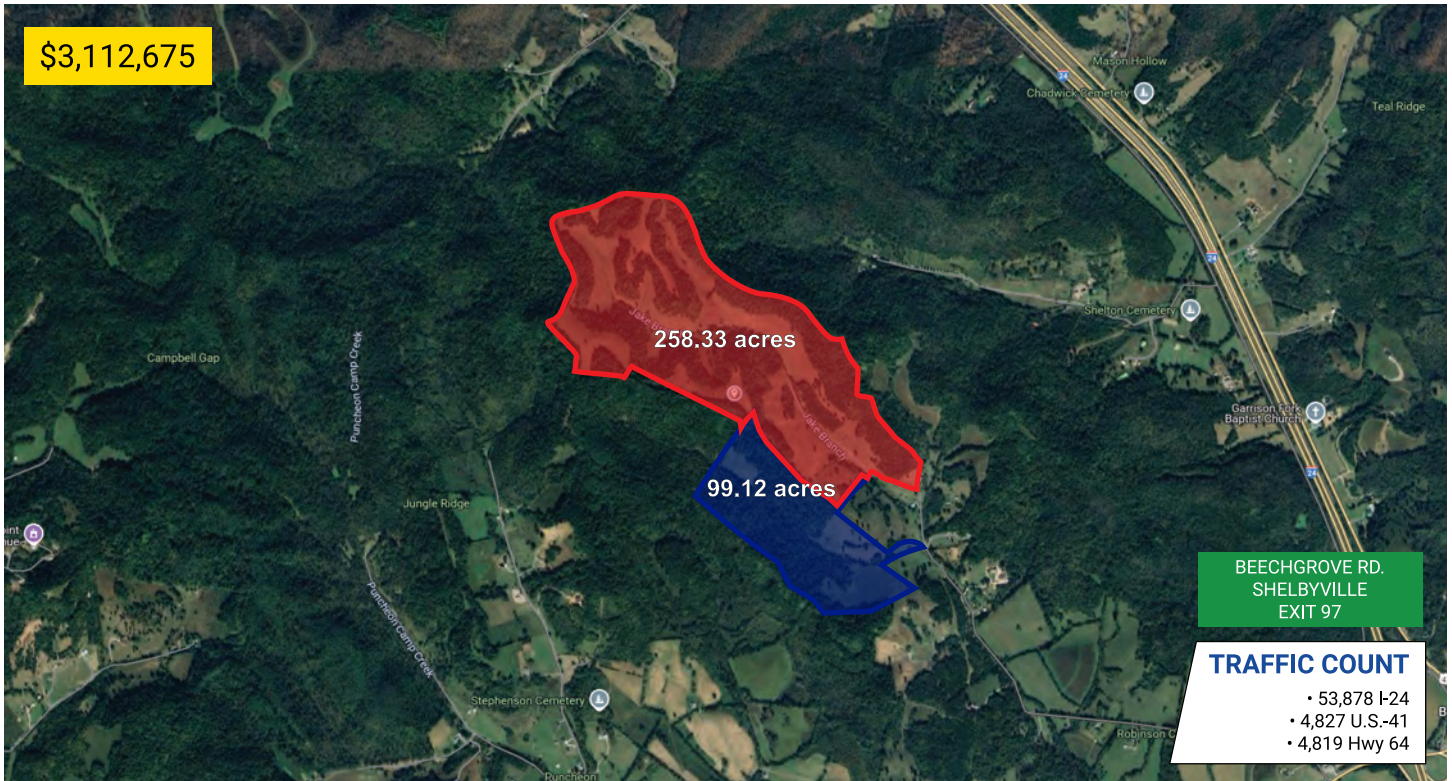


# Jakes Branch Rd. - 357.45

BEECHGROVE, TENNESSEE 37018



developments | real estate | construction  
615-896-0000



<b>Acres:</b>	357.45 +/-
<b>Structures:</b>	N/A
<b>Amenities:</b>	N/A
<b>Road Frontage:</b>	N/A
<b>Property Type:</b>	Land
<b>Zoning:</b>	WDL ; PAS

## PROPERTY HIGHLIGHTS

- Two tracts (258.33ac and 99.12 ac)
- Easy Access to I-24, U.S.-41, Hwy 64
- Approx. 1 hour to Nashville Airport



## DEMOGRAPHIC SNAPSHOT

### BEDFORD COUNTY

2025 Population Estimate	55,182
2025 Median HH Income	\$62,197
2025 Number of Households	55,182



**615-896-0000**

[www.swansondevelopments.com](http://www.swansondevelopments.com)

The information herein has been obtained from sources believed to be reliable. There is no guarantee, warranty or representation that the information herein is accurate. Any projections, opinions, assumptions, or estimates used are for example only and do not represent the current or future performance or value of the property. Property location imagery provided by Google Maps.