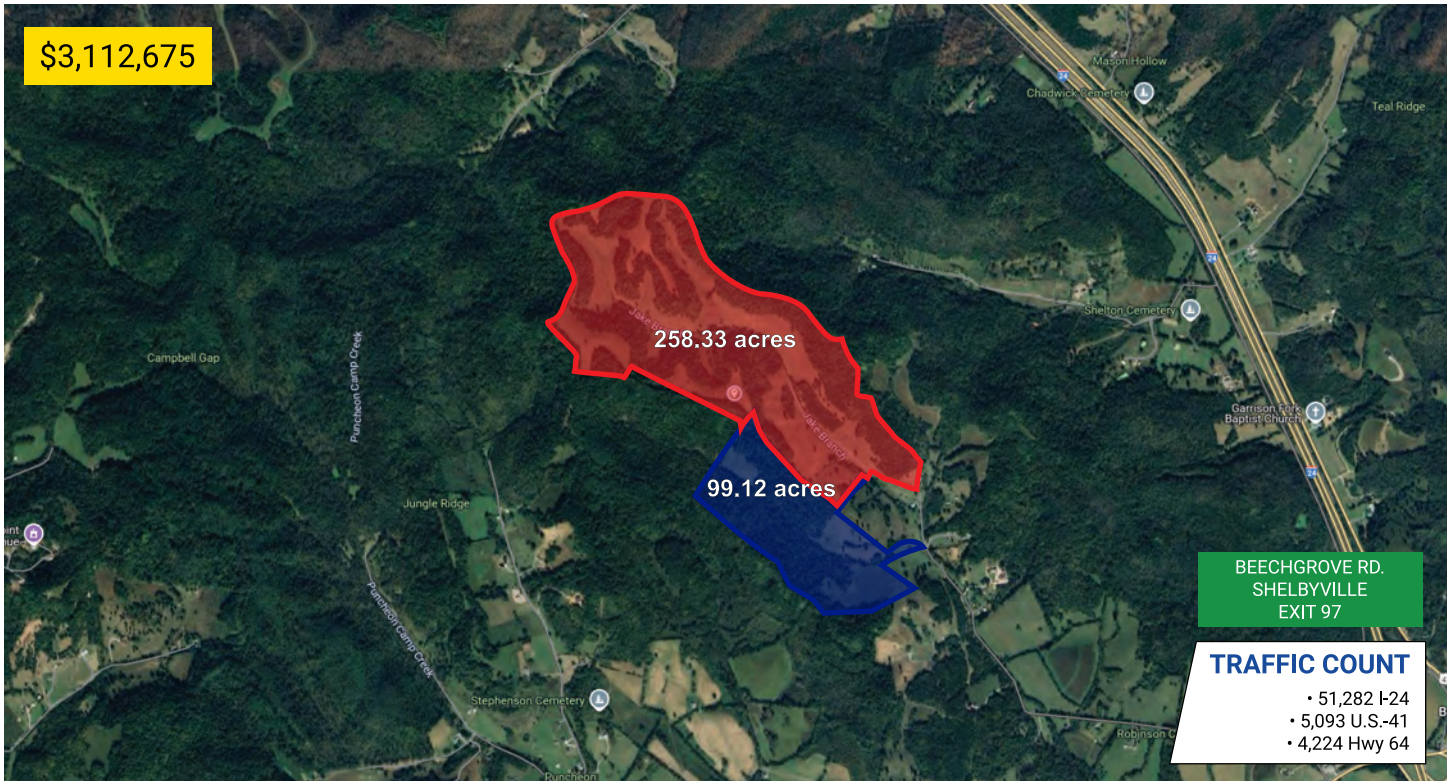


Jakes Branch Rd. - 357.45

BEECHGROVE, TENNESSEE 37018



Acres: 357.45 +/-
Structures: N/A
Amenities: N/A
Road Frontage: N/A
Property Type: Land
Zoning: WDL ; PAS

PROPERTY HIGHLIGHTS

- Two tracts (258.33ac and 99.12 ac)
- Easy Access to I-24, U.S.-41, Hwy 64
- Approx. 1 hour to Nashville Airport



DEMOGRAPHIC SNAPSHOT

BEDFORD COUNTY

2024 Population Estimate	54,146
2024 Median HH Income	\$62,197
2024 Number of Households	18,953



615-896-0000

www.swansondevelopments.com

The information herein has been obtained from sources believed to be reliable. There is no guarantee, warranty or representation that the information herein is accurate. Any projections, opinions, assumptions, or estimates used are for example only and do not represent the current or future performance or value of the property. Property location imagery provided by Google Maps.