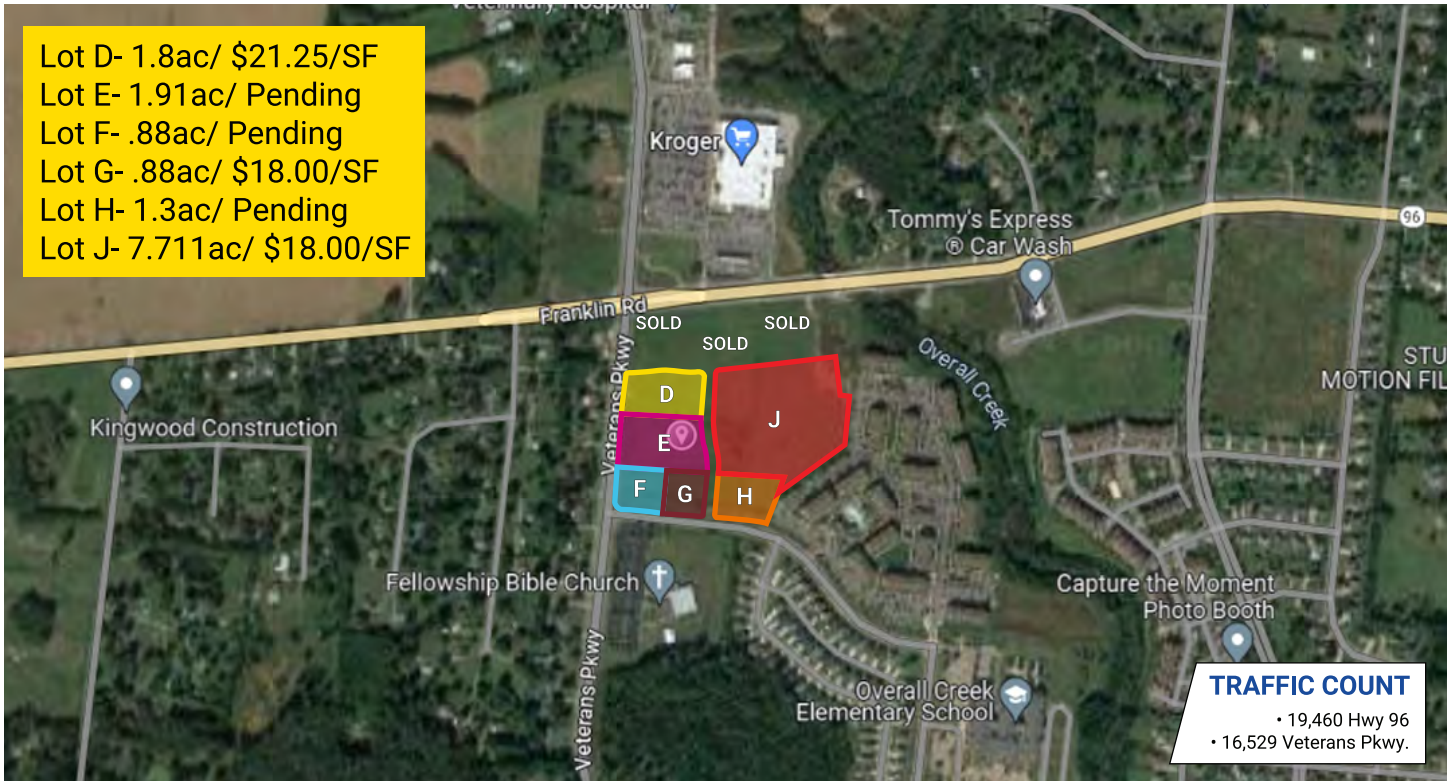


# Kingdom Crest Commercial

MURFREESBORO, TENNESSEE 37128



developments | real estate | construction  
615-896-0000



<b>Acres:</b>	14.481 +/-
<b>Structures:</b>	N/A
<b>Amenities:</b>	N/A
<b>Road Frontage:</b>	560 ft. +/-
<b>Property Type:</b>	Land
<b>Zoning:</b>	Commercial Hwy.

## PROPERTY HIGHLIGHTS

- Near Circle K (under construction) and Dunkin' Donuts (now open)
- Easy Access to I-840, I-24, and Hwy 96
- Approx. 30 minutes to Nashville Airport



## DEMOGRAPHIC SNAPSHOT

RUTHERFORD COUNTY

2023 Population Estimate	365,150
2023 Median HH Income	\$78,291
2023 Number of Households	139,340



**615-896-0000**

[www.swansondevelopments.com](http://www.swansondevelopments.com)

The information herein has been obtained from sources believed to be reliable. There is no guarantee, warranty or representation that the information herein is accurate. Any projections, opinions, assumptions, or estimates used are for example only and do not represent the current or future performance or value of the property. Property location imagery provided by Google Maps.