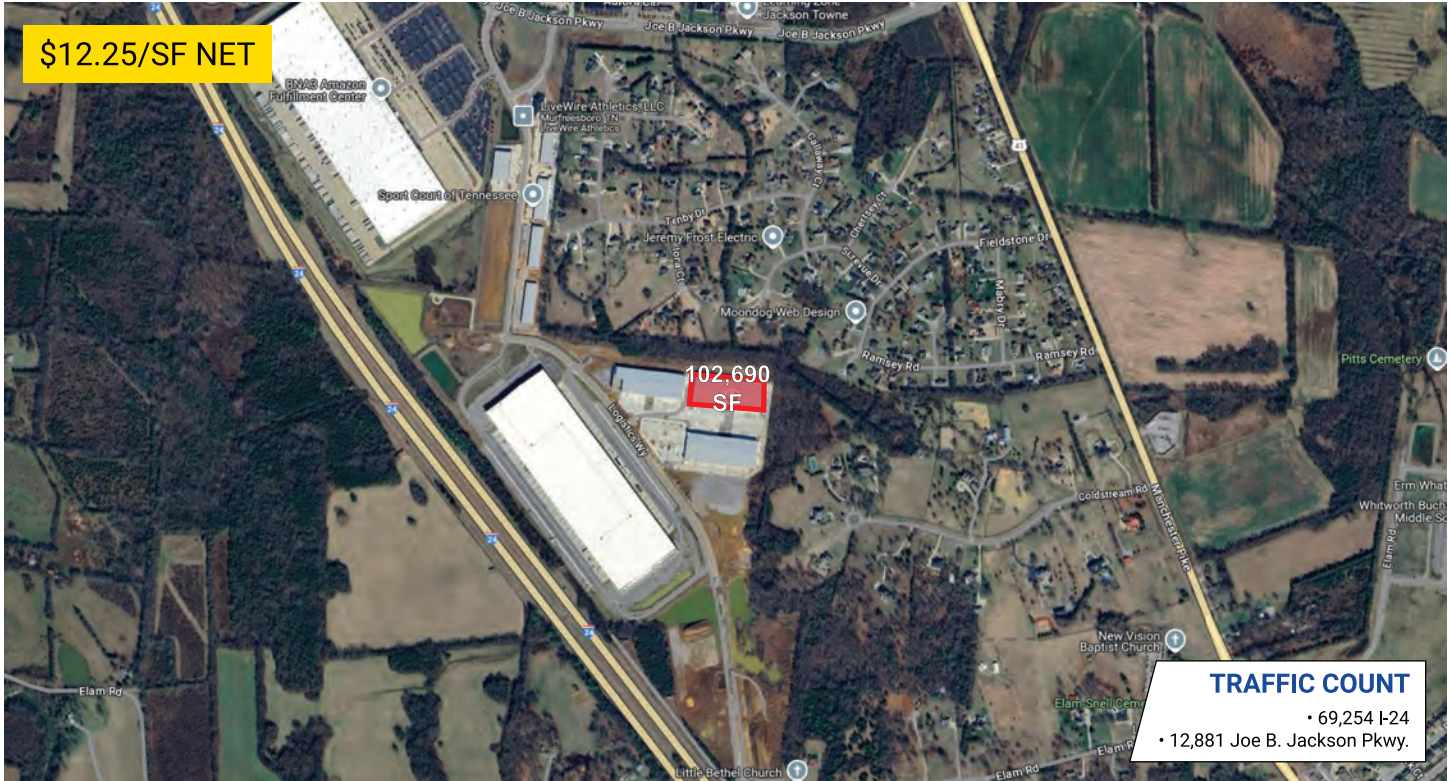


2127 Logistics Way

MURFREESBORO, TENNESSEE 37127



developments | real estate | construction
615-896-0000



Building SF:	102,690	Eave Height:	-
# of Units:	5	Electricity:	480v ; 1,600amps
Units SF:	18,000 - 102,690	Zoning:	PID

PROPERTY HIGHLIGHTS

- Completed in 2024
- 3 phase electric
- Built with energy efficient panels
- Suites can be combined
- Easy Access to I-24, U.S.-231 and U.S.-41
- Approx. 35 minutes to Nashville Airport

DEMOGRAPHIC SNAPSHOT

RUTHERFORD COUNTY

2025 Population Estimate	358,394
2025 Median HH Income	\$87,758
2025 Number of Households	138,402



615-896-0000

www.swansondevelopments.com

The information herein has been obtained from sources believed to be reliable. There is no guarantee, warranty or representation that the information herein is accurate. Any projections, opinions, assumptions, or estimates used are for example only and do not represent the current or future performance or value of the property. Property location imagery provided by Google Maps.