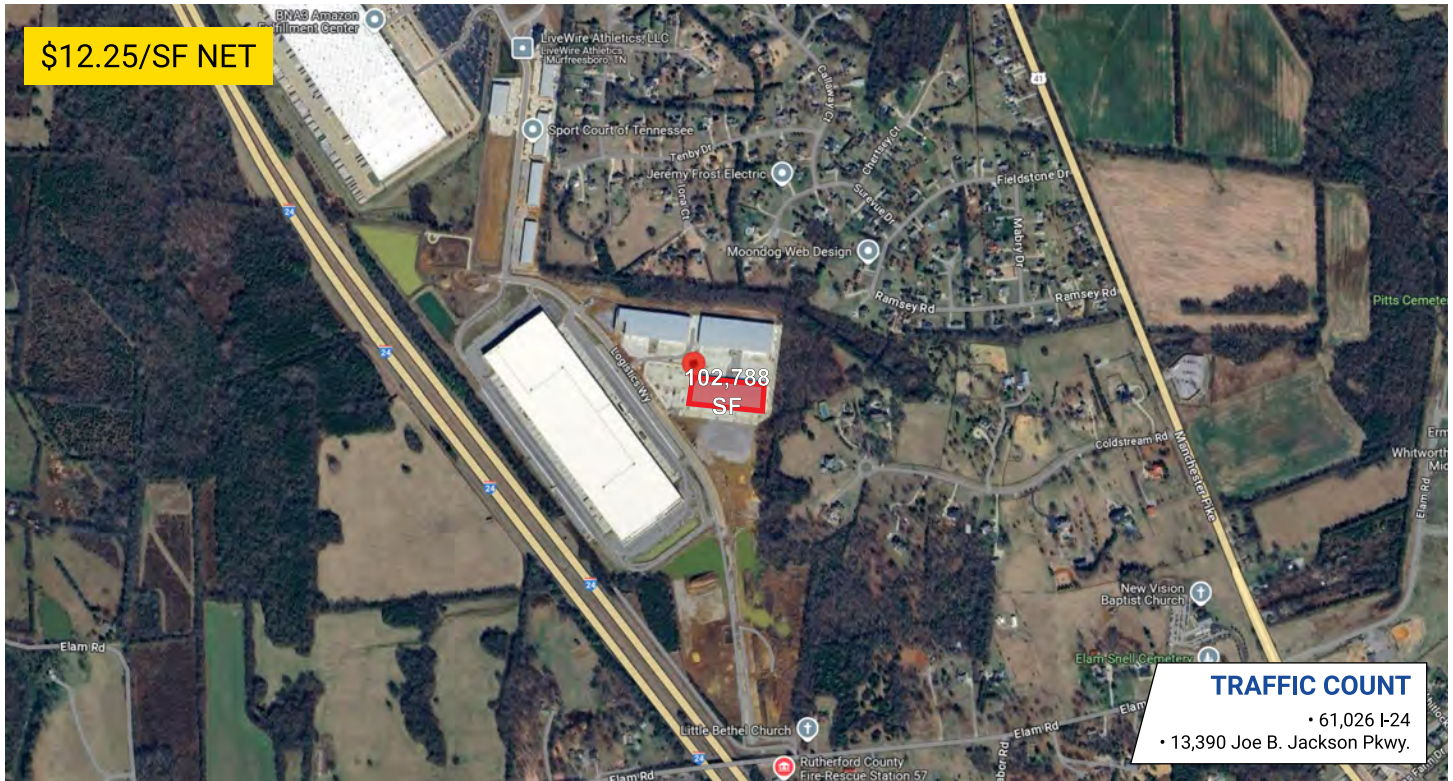


# 2139 Logistics Way

MURFREESBORO, TENNESSEE 37127



developments | real estate | construction  
615-896-0000



Building SF: 102,788  
# of Units: 4  
Units SF: 18,000 - 102,788

Eave Height: -  
Electricity: 480v ; 400amps  
Zoning: PID

## PROPERTY HIGHLIGHTS

- Completed in 2024
- 3 phase electric
- Built with energy efficient panels
- Suites can be combined
- Easy Access to I-24, U.S.-231 and U.S.-41
- Approx. 35 minutes to Nashville Airport

## DEMOGRAPHIC SNAPSHOT

### RUTHERFORD COUNTY

2024 Population Estimate	373,520
2024 Median HH Income	\$78,291
2024 Number of Households	122,510



**615-896-0000**

[www.swansondevelopments.com](http://www.swansondevelopments.com)

The information herein has been obtained from sources believed to be reliable. There is no guarantee, warranty or representation that the information herein is accurate. Any projections, opinions, assumptions, or estimates used are for example only and do not represent the current or future performance or value of the property. Property location imagery provided by Google Maps.