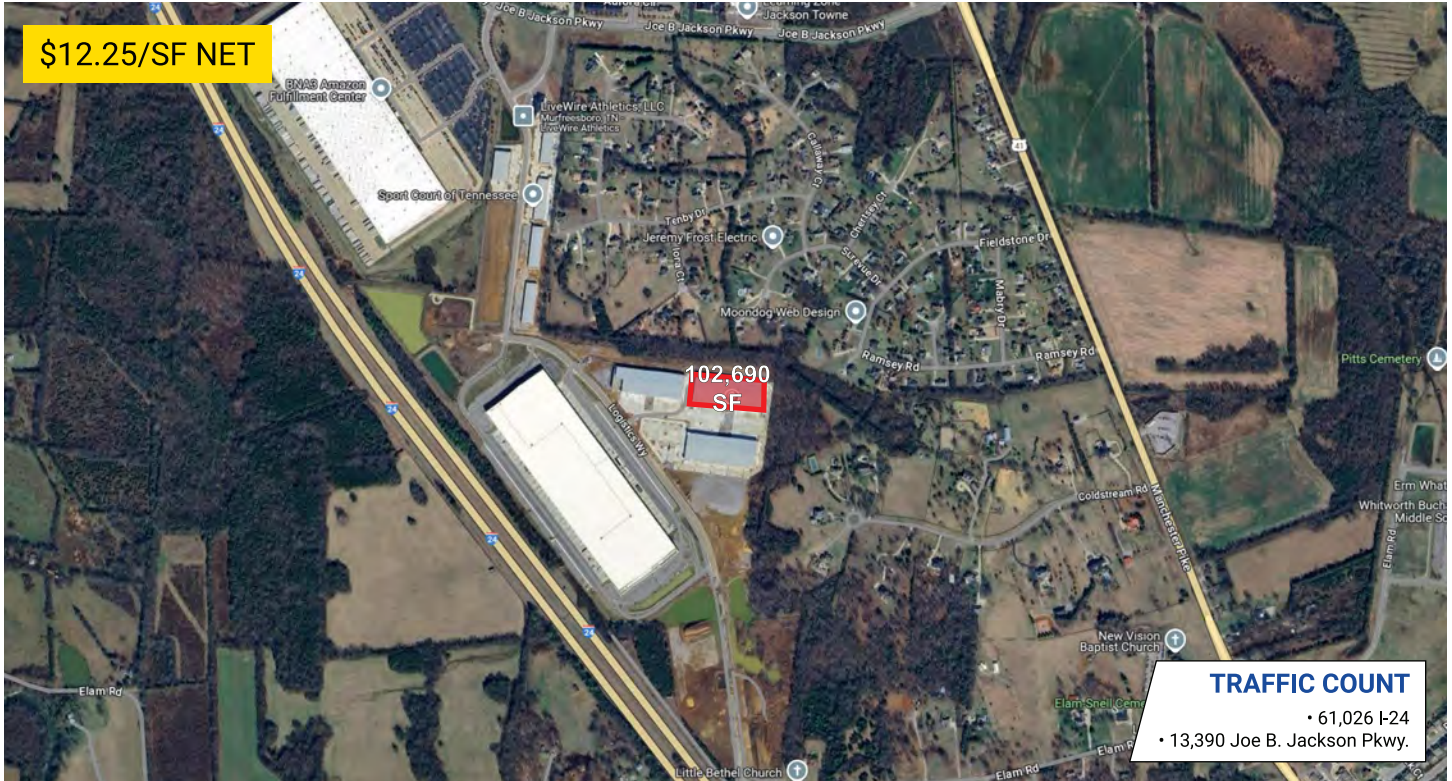


2127 Logistics Way

MURFREESBORO, TENNESSEE 37127



developments | real estate | construction
615-896-0000



Building SF: 102,690
of Units: 5
Units SF: 18,000 - 102,690

Eave Height: -
Electricity: 480v ; 1,600amps
Zoning: PID

PROPERTY HIGHLIGHTS

- Completed in 2024
- 3 phase electric
- Built with energy efficient panels
- Suites can be combined
- Easy Access to I-24, U.S.-231 and U.S.-41
- Approx. 35 minutes to Nashville Airport

DEMOGRAPHIC SNAPSHOT

RUTHERFORD COUNTY

2024 Population Estimate 373,520
2024 Median HH Income \$78,291
2024 Number of Households 122,510



615-896-0000

www.swansondevelopments.com

The information herein has been obtained from sources believed to be reliable. There is no guarantee, warranty or representation that the information herein is accurate. Any projections, opinions, assumptions, or estimates used are for example only and do not represent the current or future performance or value of the property. Property location imagery provided by Google Maps.