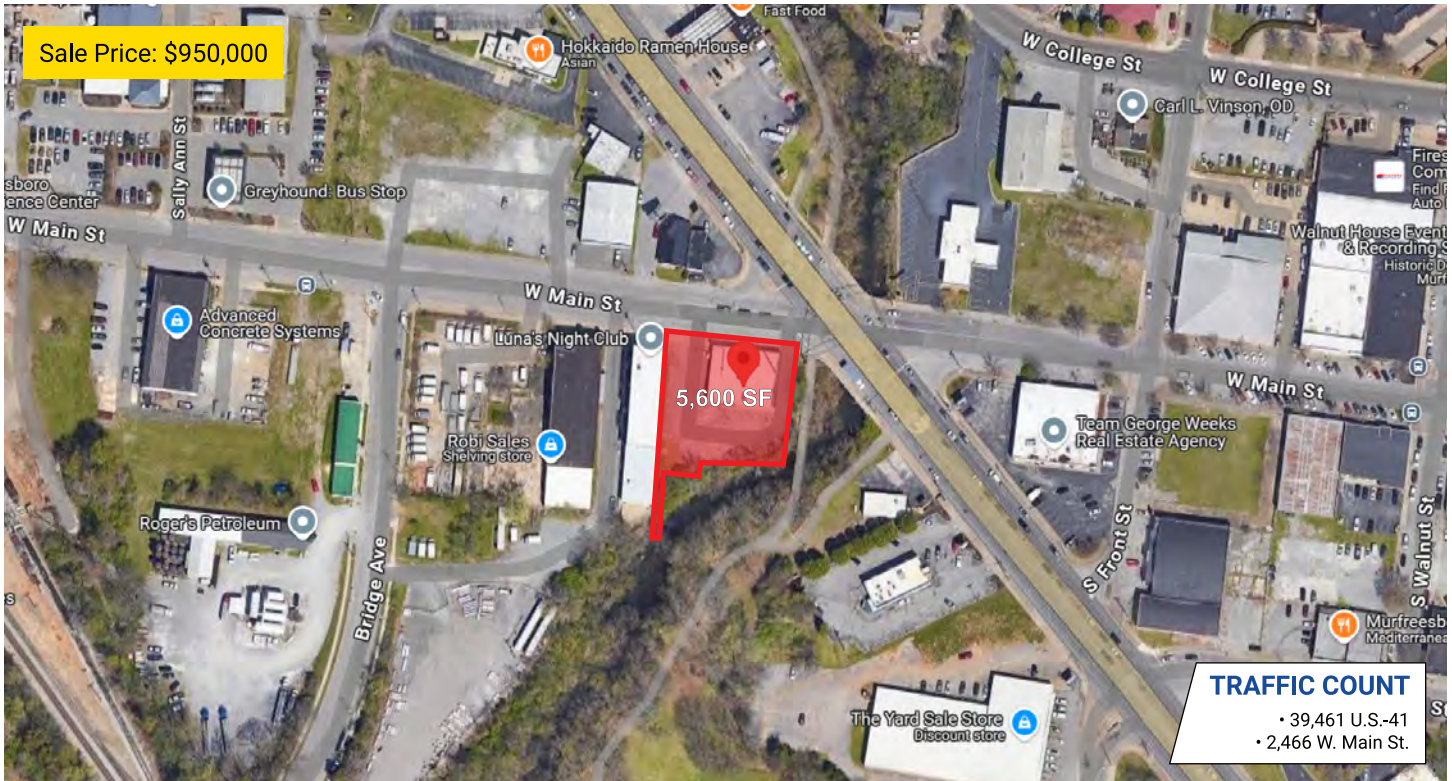


517 W. Main St.

MURFREESBORO, TENNESSEE 37129



developments | real estate | construction
615-896-0000



Building SF:	5,600	Eave Height:	14'
# of Units:	3	Electricity:	110/220v; 400amp
Units SF:	1,700 - 2,122	Zoning:	Heavy Industrial

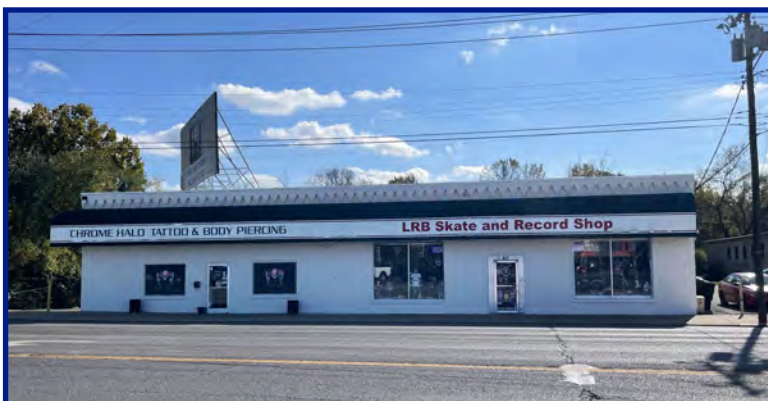
PROPERTY HIGHLIGHTS

- Single & 3 phase electric
- Advertise on 1/4 of the billboard sign for an additional \$100/month
- Easy Access to I-24, U.S.-41, U.S.-231 and Hwy 96
- Approx. 30 minutes to Nashville Airport

DEMOGRAPHIC SNAPSHOT

RUTHERFORD COUNTY

2024 Population Estimate	373,520
2024 Median HH Income	\$78,291
2024 Number of Households	122,510



615-896-0000

www.swansondevelopments.com

The information herein has been obtained from sources believed to be reliable. There is no guarantee, warranty or representation that the information herein is accurate. Any projections, opinions, assumptions, or estimates used are for example only and do not represent the current or future performance or value of the property. Property location imagery provided by Google Maps.