

# 820 N. Thompson Lane Suite 2B

## Murfreesboro, Tennessee 37129

**2<sup>nd</sup> Floor**  
**1 Bedroom 1 Bath**  
**960 Sq. Ft.**

### Features

- Keyless Entry
- Private Balcony
- Elegant Crown Molding
- High Ceilings
- Open Kitchen/Living Space
- Granite Countertops
- Hardwood/Tile
- Soft-close Cabinets and Drawers
- Built-in Office Nook
- Stainless Steel Appliances
- Full-size Washer & Dryer
- Under-cabinet Task Lighting
- Generous Closet Space
- Energy Star Heat & Air
- Energy Star Windows
- Fire Protection System
- Cable/Internet Ready

### Concierge Services

- Package Acceptance
- Postage Service
- Drop Off/Pick Up Dry Cleaning Services



### Amenities

- Security Cameras
- 24/7 Fitness Studio
- Social Lounge
- 4<sup>th</sup> Floor Entertainment Room
- 4<sup>th</sup> Floor Open-Air Veranda
- Trash Chute on all Floors
- Secure Dedicated Parking Space & Storage Unit in Underground Garage
- Smoke/Vape Free Community
- Controlled Access Building & Elevator
- Pet Run
- Grilling & Picnic Patio

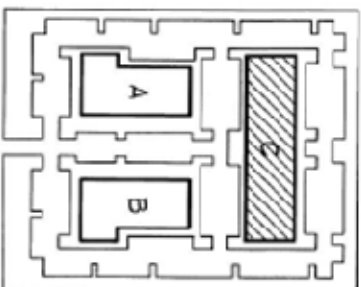
**For Sale:**  
**\$300,000.00**

\*Ask about Financing Options

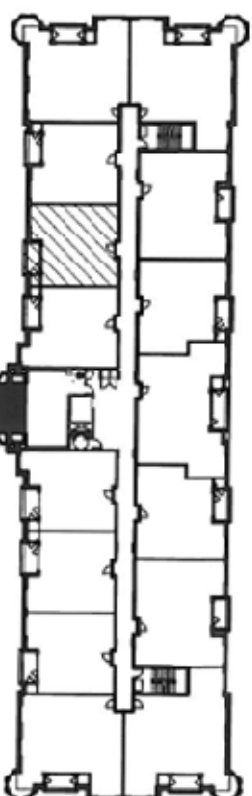


615-896-0000

\* Pricing subject to change without notice.  
\*\*Actual square footage and finishes may vary.



LOCATION MAP



KEY PLAN - SECOND FLOOR



SUITE 2B  
960 S.F.

BALCONY  
SUITE 2B  
74 S.F.



1

SCALE 3/32" = 1'-0"

**SUITE 2B**  
**820 NORTH THOMPSON LANE**

**WAKEFIELD**  
**BEASLEY &**  
**ASSOCIATES**

ARCHITECTS/INTERIORS

1000 WEST 10TH AVENUE  
SUITE 100  
DENVER, CO 80202  
(303) 733-1100



*The*  
**Gateway**  
*Village*  
Thompson, CO

**820 THOMPSON**  
**SECOND LEVEL**  
**820**  
**NORTH**  
**THOMPSON LANE**

**W. BEASLEY**  
**ARCHITECT**

THIS PLAN IS THE PROPERTY OF W. BEASLEY ARCHITECT  
IT IS TO BE USED ONLY FOR THE PROJECT AND SITE SPECIFICALLY  
IDENTIFIED HEREON.

DATE: 01/11/01

BY: W. BEASLEY

SCALE: 3/32" = 1'-0"

PROJECT: 820 THOMPSON

LEADER: CLARENCE

DOCUMENT: L-C-2B