

820 N. Thompson Lane Suite 2B

Murfreesboro, Tennessee 37129

2nd Floor
1 Bedroom 1 Bath
960 Sq. Ft.

Features

- Keyless Entry
- Private Balcony
- Elegant Crown Molding
- High Ceilings
- Open Kitchen/Living Space
- Granite Countertops
- Hardwood/Tile
- Soft-close Cabinets and Drawers
- Built-in Office Nook
- Stainless Steel Appliances
- Full-size Washer & Dryer
- Under-cabinet Task Lighting
- Generous Closet Space
- Energy Star Heat & Air
- Energy Star Windows
- Fire Protection System
- Cable/Internet Ready

Concierge Services

- Package Acceptance
- Postage Service
- Drop Off/Pick Up Dry Cleaning Services



Amenities

- Security Cameras
- 24/7 Fitness Studio
- Social Lounge
- 4th Floor Entertainment Room
- 4th Floor Open-Air Veranda
- Trash Chute on all Floors
- Secure Dedicated Parking Space & Storage Unit in Underground Garage
- Smoke/Vape Free Community
- Controlled Access Building & Elevator
- Pet Run
- Grilling & Picnic Patio

For Sale:
\$300,000.00

*Ask about Financing Options

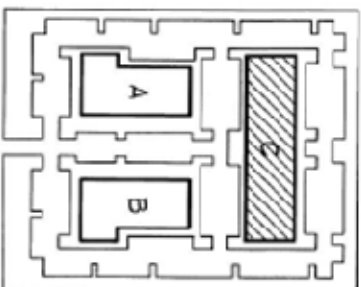


615-504-0000

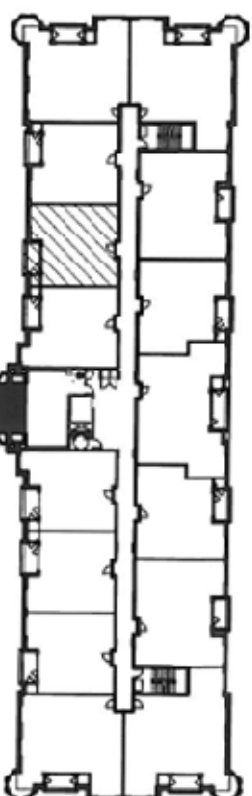
brenda@swansoncompanies.com

* Pricing subject to change without notice.
**Actual square footage and finishes may vary.

05162025



LOCATION MAP



KEY PLAN - SECOND FLOOR



SUITE 2B
960 S.F.

BALCONY
SUITE 2B
74 S.F.



1

SCALE 3/32" = 1'-0"

SUITE 2B
820 NORTH THOMPSON LANE

WAKEFIELD
BEASLEY &
ASSOCIATES

ARCHITECTS INTERIORS

1000 WEST 10TH AVENUE
SUITE 100
DENVER, CO 80202
(303) 733-1100



The
Gateway
Village
Thompson, CO

820 THOMPSON
SECOND LEVEL
820
NORTH
THOMPSON LANE

W. BEASLEY
ARCHITECT

THIS PLAN IS THE PROPERTY OF W. BEASLEY ARCHITECT
IT IS TO BE USED ONLY FOR THE PROJECT AND SITE SPECIFICALLY
IDENTIFIED HEREON.

DATE: 01/11/01

BY: W. BEASLEY

SCALE: 3/32" = 1'-0"

PROJECT: 820 THOMPSON

LEADER: CLARENCE

DOCUMENT: L-C-2B

DATE: 01/11/01